

*Grandweld
to build
3 Rescue and
Salvage Tugs
for the
Algerian Ports*

*Grandweld
to build
A Diving Support
Vessel
for Adnoc*

*Grandweld
delivered
2 Crewboats
last month*

What's Inside?

Aluminium Ship Building	2
Steel Ship Building	3
Ship Repairs	4
Employees	5

Part of

GMMOS

GMMOS GROUP



Message From the GM

Here, we have come to end to 2009, which has been a year of many major achievements at Grandweld. The successful deliveries of 16 new vessels during the year has been the most significant, as they were delivered on-time and within budget to the satisfaction of our clients.

The Ship Repair division of Grandweld had the largest share of vessels amongst those docked at Al Jadaf last year.

Grandweld has secured major Shipbuilding contracts valued in excess of \$128 million for building three Rescue and Salvage Tugs for the Algerian Ports in spite of fierce interna-

tional competition. We could not have achieved this without the extraordinary efforts and dedication of each and everyone at Grandweld. However, our pursuit for leading the industry does not end here and our passion for innovation is relentless. We at Grandweld believe to provide maximum benefit to our shareholders through our commitment to the customers by maximizing operational efficiency and our genuine compassion to the employees of Grandweld.

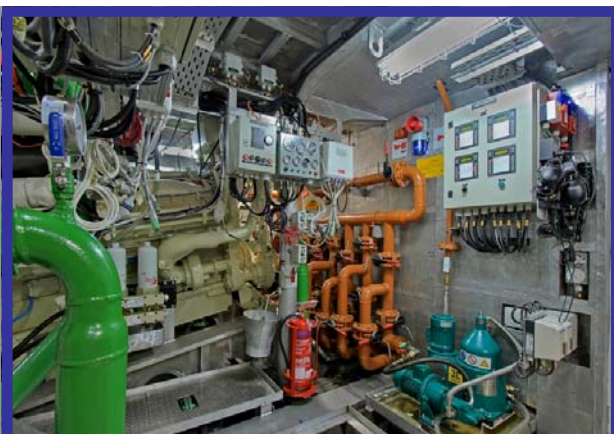
As we now move ahead to 2010, we are fully aware and prepared for the challenges ahead, yet optimistic. We are looking forward



**Jamal Abki,
General Manager**

to another good year for both our customers as well as for us.

Aluminium Ship Building



Bourbon Adelaide - 165ft Fast Supply Intervention Vessel

The aluminium shipbuilding division at Grandweld had a busy 2009 and with its order book for 2010 already strong, is looking forward to an even busier 2010.

With the culture of continuous improvement, Grandweld has increased its shipbuilding capacity. This has allowed greater numbers of hulls to be delivered in 2009 and attracted new clients that recognize the quality of ships built by Grandweld.

A total of 12 vessels were delivered during the last year, including:

- One Seismic Survey Ship for CGG
- Two Cable Laying boats for CGG
- Six 41m Crewboats for Stanford Marine
- Two 24m Crewboats for Sharaf Shipping

- One 51m Fast Supply Intervention Vessel for Bourbon

2010 ORDER BOOK

New orders secured during 2009 and due for delivery in 2010 include:

- Seven 41m Crewboats
- One 21.3m Crewboat

NEW DESIGNS

The new 21.3m Crewboat is designed for anchorage duties and has a maximum speed of 20knots. The vessel can carry up to 15 tonnes of cargo and 18 offshore personnel.

The 2010 model of the 41m Crewboat was extensively redesigned and upgraded by Grandweld's engineering department to ensure greater cargo capacity and speed.

The new design incorporates advanced aluminium materials and

Bourbon Adelaide Engine Room

enables highly efficient construction techniques.

To optimize the design, 3D computer models were made for structural stress analysis and arrangements of electrical, piping and mechanical systems. The vessels are certified to BV, LRS and ABS.

AFTER SALES SERVICE

Grandweld is focused on customer service. The after sales service team has grown and has improved management systems for post delivery maintenance and warranty support. This step has improved response times and allowed greater customer support.

A recent service event for the aluminium shipbuilding division included dry docking support for a vessel in Malta.



CONSOLE FOR THE 165ft FSIV



2009 MODEL 41m CREWBOAT

Steel Ship Building



Bourbon Auroch - 100 Ton Bollard Pull Escort Tug

2009 has been an eventful year for Grandweld. Four high performance 100 ton Bollard Pull Escort Tugs were successfully delivered for Bourbon Supply Investissements, France.

Three vessels of the series, Bourbon Yack, Bourbon Ox and Bourbon Auroch are now in operation at the West Coast of Africa. And the last in the series, Bourbon Bison will soon be in operation.

BOLLARD PULL ESCORT TUGS

The vessels were designed and constructed to meet with owner's requirements which included berthing and unberthing of large ships, particularly Oil and LNG Tankers at exposed terminals. It provides a high standard of tanker escort capability, emergency response and fire-fighting capabilities in the vicinity of Oil and LNG terminals. With high professionalism, Grandweld was able to satisfy the clients by on-time delivery of Quality Product. The Bourbon Vessels are powered by

two MAK 9M25 engines, each producing 2970KW and with two Schottel SRP 3030CP propulsion units. The automation and instrumentation system of the vessel is customized for regular operations duty with a designated unmanned engine room.

The vessels are equipped with sophisticated machinery systems and advanced navigation communication systems & networking facilities. A number of security and safety systems like Bilge alarms, flooding alarms, fire and safety alarms are installed. It also includes a compact Techsol MAX II System with full redundancy and built in software for tank gauging and alarm. Further security is provided by Ship Security Alert System (SSAS) and intruder alert system which are in compliant with the latest ISPS requirements.

UTILITY VESSELS

Three 36m utility boats are under construction which are scheduled for delivery during the first quarter

Wheel House - Bourbon Auroch

of 2010.

These Utility vessels, classed under Bureau Veritas, are specially designed to support offshore Oil Platforms, accomplish a variety of offshore duties. They are well equipped with accommodation for 44 offshore personnel.

Each vessel is powered by two 1,450HP Caterpillar engines to achieve a speed of 13 knots and is provided with a 2T Bow Thruster for excellent maneuverability.

CONVERSION OF BARGE

Currently, the Steel Division of Grandweld is also engaged in the Conversion of Dump Barge to self propelled DP1 Barge by installing three electric driven Schottel pump jets units scheduled for delivery by February 2010.

2010 commenced on a high note by signing four new contracts which will keep us busy till 2012.



36m Utility Boat



Interiors of the Bourbon Auroch

Ship Repairs



Laser Alignment for Straight Propulsion Required for Chock Fasting / Boring

Year 2009 brought a remarkable growth for the Ship Repair Division at Grandweld. We have successfully undertaken more than 700 repair jobs last year.

One of the most prestigious job undertaken by Grandweld during the year was the Installation of a helideck on M/V HEIMDAL - Multi purpose DP Survey Accommodation vessel. The job was accomplished well ahead of the scheduled time to the satisfaction of the clients.

During the course of the year, we have been successful in adding 17 new clients into our portfolio.

Grandweld is the only shipyard in Asia having the ABS approved procedure for repair and cladding of SS tailshafts.

Another major job executed last year was the overhaul on two of the Voith Schneider Propulsion Units of Al Qabil - a Tug boat.

During 2009, we established an alignment division with state of the art technologies including laser alignment equipments.

Grandweld did major conversion and accommodation refurbishment on 8 ships. Most of them were repeat orders which proved the customer satisfaction on Grandweld's quality and delivery commitments.

Most remarkable job during 2009 was the grounding damage repairs of the vessel Express 59. With the support of our in house Engineering Department, we reconstructed the entire bottom hull of this vessel.

Another major milestone was the manufacturing of new tailshaft under LR with precision machining of SKF coupling landing area.



Main Engine Fuel Pump Overhauled by Grandweld

Standard Chartered Dubai Marathon 2010

GMMOS Group participated in the Standard Chartered Dubai Marathon 2010 held on January 22, Friday.

Melvin Gacho, Gomma Abdul Azeem, Aman Shek Kale, Ayub Tiker Defo, Ebrahim Mohd. Fatoon, Larry Zerna and Abdul Reshad were the ones who participated for the event. 6 out of these 8 participants belong to Grandweld and one each from GMMOS and Gallagher.

The Westin Hotel Dubai Mina Seyahi was the start and the finish point of the race. The race started at 6:45am and lasted till about 8:30am. The 10km Road Race area was just below the Dubai Media City Amphitheatre.

Live bands and DJs were present throughout the day at the start and finish point for the entertainment of participants and spectators.



The participants had a good time during the Marathon and a few of them mentioned their interest to

participate for the Ras Al Khaimah Marathon as well.

Grandweld Team Efforts



Grandweld respects and appreciates each of its employees. It is due to their dedication and team efforts that Grandweld has reached where it is today.

*Left: Our Machine Shop Team
Below: Our Transport Team*



GRANDWELD

P.O. Box 24755 - Dubai - UAE

Tel: +971 4 3241707 Fax: +971 4 3231706

info@atos-uae.com www.grandweld.com

We welcome any comments, news, information or personal contributions to:

info@atos-uae.com

