



Grandweld | Waves

Issue 8 - December 2011



We Build For You

Inside this Issue

- Grandweld New Contracts Announcements
- Grandweld Latest Deliveries
- "Global Queen" 41M Delivery Ceremony
- Conversion Project Update

Message from the GM



As we prepare to pay farewell to 2011, I wish to run through the last 12 months important milestones that mark major achievements for Grandweld:

Building of First Dive Support Vessel in the Region

Highly technical project that included specialized equipment which will make this vessel extremely capable and unique, among very few similar vessels worldwide.

Some of these equipments are: Twin dive support systems, hydraulic crane (70 Ton @ 14 mt), active ballast system, dynamic positioning system, etc.

Re-designing the 41 Mtr. Crew Supply Boat

Re-designed the 41 Mtr. vessel and produced the third generation with enhanced aesthetics which performs the best amongst her competitors. Three new vessels of the new design are already delivered.

Ship Operators and Chartering companies highly appreciated these vessels and therefore we have re-created the demand for this class of vessels.

New Design / build and delivery of the Bow Landing Crew Boat

The 24 mtr vessel with V-shaped bow, 31 knots speed was completely in-house designed.

The aim was to produce a bow landing vessel that can achieve 30 knots at rough seas with advanced sea keeping capabilities and comfort for passengers. Proto type vessel was built and tested successfully under LRS Class rules. Vessel was built for Mutawa Marine and is operating with "TOTAL", Offshore Abu Dhabi. This new class of vessel designed by our Engineering & Design Team was nominated as a significant vessel in the Top 20 vessels of the year.

New Orders

Added to the order book during 2011:

- 2 x 57M Work/Maintenance Vessels
- 1 x 33.5M Crew Vessel
- 2 x 32M Harbour Tug with Azimuthing Thruster.
- 6 x Seismic Support Vessels with Hybrid Propulsion
- 2 x AHTS BP 90 Ton
- 2 x 21M Aluminium Crew Boats
- 3 x 33.5M Aluminium Crew Boats

Expansion and Developments

- While keeping our current Jadaf Yard dedicated for light vessels, all large vessels construction

will move to DMC as of last Quarter 2011. Offices of Grandweld will relocate to DMC starting April 2012.

- Additional yard taken at DMC land plot SR 10, the new 20,000 sq.m yard already commissioned, making Grandweld the largest Shipyard at DMC.

HR growth during 2011

A noticeable growth in human resources has been achieved during 2011 to keep up with our business plan.

Grandweld has reinforced the engineering and project teams with experienced staff as well as promising fresh graduates. The Engineering and project teams grew by 15%. The skilled labor force grew 56% to reach 1500 skilled employees.

Grandweld has expanded from 1150 employees at 2011 start to 1800 employees at the end of the year.

Jamal Abki



Grandweld office at DMC



Land Plot SR 10

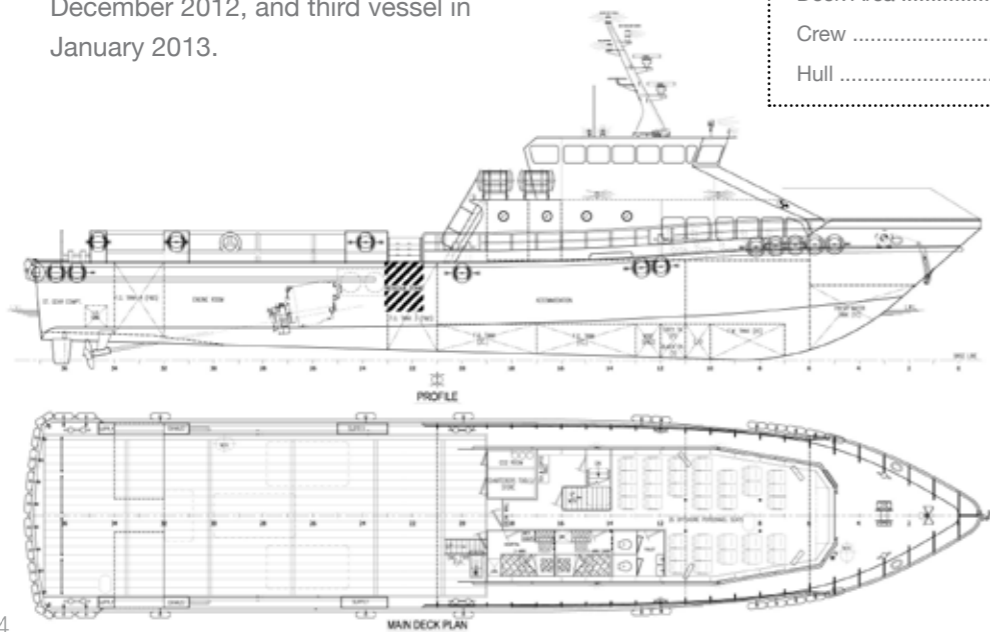
Grandweld to Build and Deliver three (3) 33.5M Fast Aluminum Crew Boats for Zamil Offshore

Grandweld Shipyards concludes a successful year by securing contract to design, build, and deliver three 33.5M Fast Aluminum Crew Boats for Zamil Offshore. The contract was signed by Mr. Sufyan Al Zamil, President of Zamil Offshore, and Mr. Jamal Abki, General Manager of Grandweld Shipyards. The 33.5M fast crew boats will be powered by 3 high speed diesel engines driving 3 fixed pitch propellers to produce a speed of 26 Knots and continued service speed of 24 Knots. The vessels will be designed and built according to the classification rules and requirements of Bureau Veritas for Aluminum vessels. The vessels will be chartered by Saudi Aramco, and will be utilized to transport personnel and support offshore oil & gas operations. The first vessel is scheduled for delivery in November 2012, second vessel in December 2012, and third vessel in January 2013.



33.5 MAIN PARTICULARS

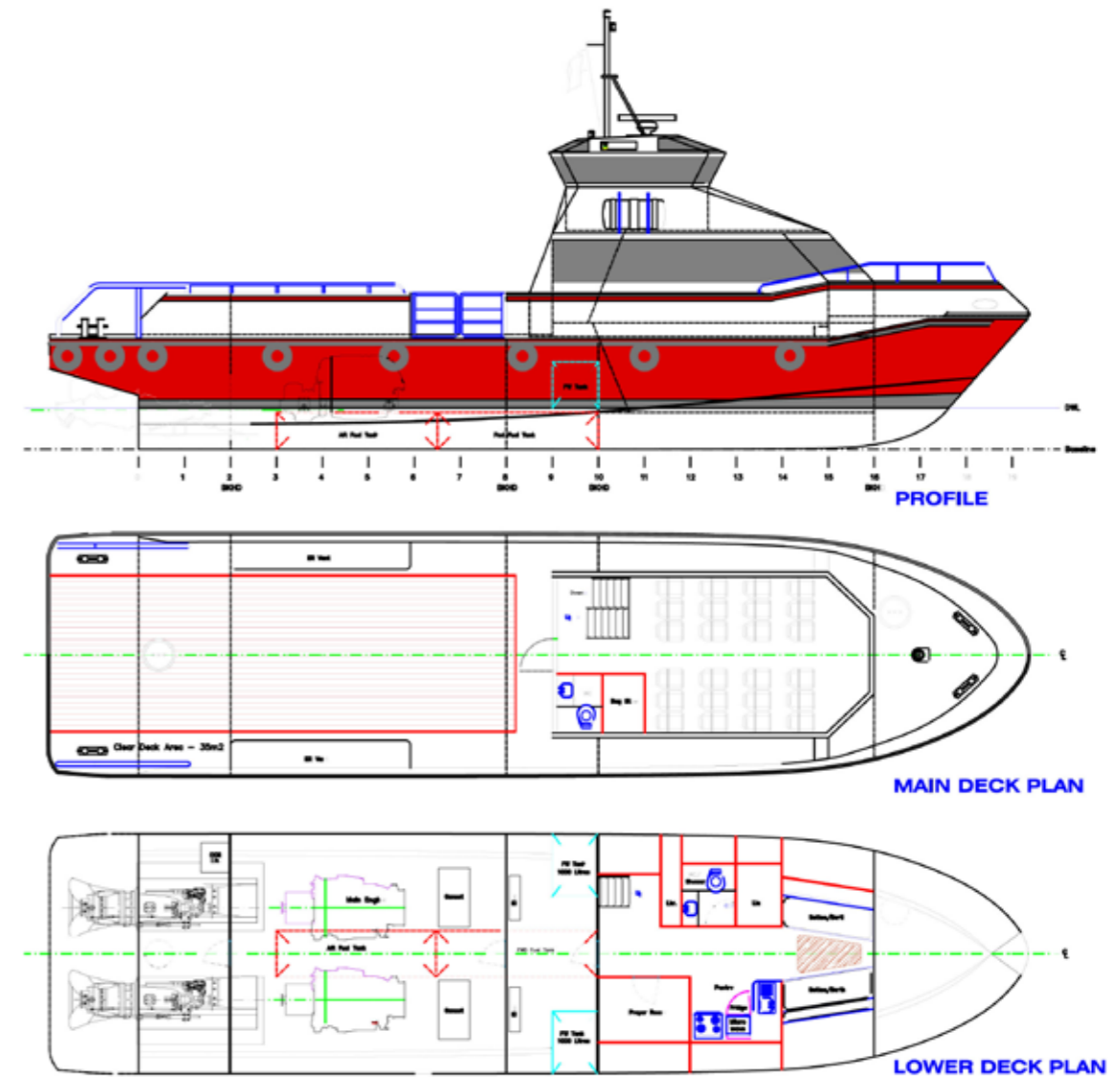
LOA	33.5M
Breadth	6.70M
Draft	1.80M
Complement	11 Crew + 35 Passengers
Speed	24 Knots
Deck Area	90 sqm
Crew	12
Hull	Aluminum



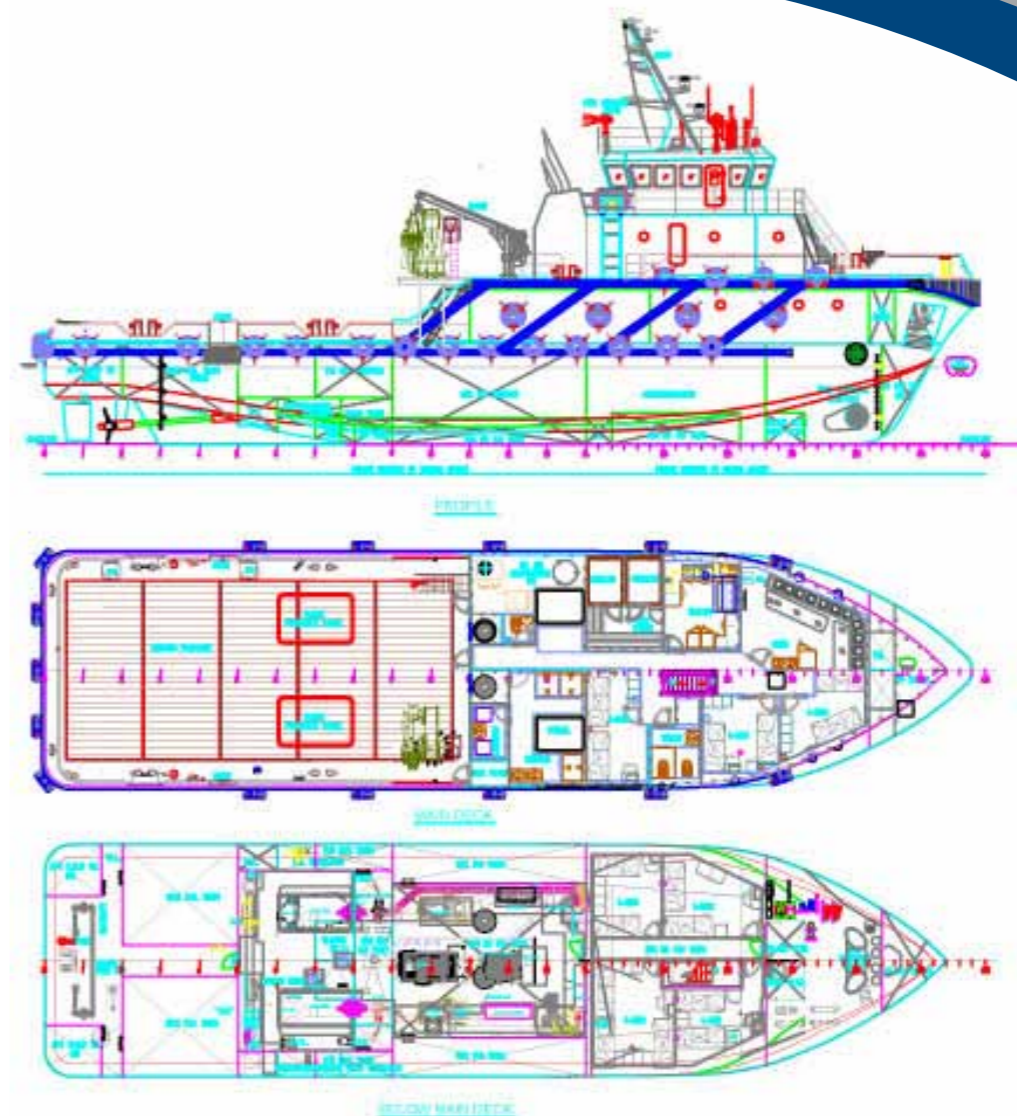
A New contract to Build Two Service/ Crew Boats for KOTC

We have recently signed a new contract to design, build and deliver two 21.3M service/ crew boats for Kuwait Oil Tanker Company. Contract signing was held today November 29, 2011 at Grandweld Shipyards facilities in Al Jadaf, Dubai, and the contract was signed between Mr. Jamal Abki, Grandweld General Manager, and Mr. Faisal Ali, KOTC Deputy Managing Director.

The 21.3M vessels will be powered via twin waterjet installation to ensure high speed and maneuvering capabilities which will be utilized by KOTC Marine Agency Branch to safely transport passengers and cargo to and from tankers calling Kuwaiti Oil Terminals. Delivery of the two vessels is scheduled in the last quarter of 2012.



The First of Two 36M Utility Vessels Launched



On December 20, 2011, the new vessel “Al Theebah” the first of two 36M utility vessels has been delivered to the owner Inter Gulf Marine. This vessel is a heavily modified version of sister vessels which were initially launched by Grandweld Shipyards.

This new generation vessel is equipped with ample facilities to transport fuel oil and fresh water. The vessel is equipped with external fire fighting capability and has an accommodation for 40 people. The vessel is installed with an offshore crane to carry 3.2 ton@11.4M in offshore situation or 5.0 ton@11.4m at shipboard situation.

The vessel has a deck area of more than 100Sqm specially designed to support offshore operations. The sister vessel is scheduled for delivery in January 2012.

36M MAIN PARTICULARS

Type	Crew/Utility Vessel
Length overall	36.00 m
Moulded breadth	9.00 m
Moulded depth	3.80 m
Crew Complement	Up to 40 persons
Deck Area	100 Sqm
Class	BV
Main Engines	2 x CAT C 32 1300 BHP @2100 RPM
External FiFi	2 x FIRE MONITORS RATED 600M3 / HR
	2 x FIRE PUMPS RATED 600M3 / HR
Hull	Steel

Delivery of the Second of Three 41M Crew Boats



“Global Queen” the second of three 41M crew boats was successfully handed over to the owner Global Marine on the 10th November 2011.

Global Queen, an advanced version of the 41m crew boat, is the 18th of its type to be built from a series of sister vessels that were initially launched by Grandweld in 2006. This vessel will represent the third generation of its series with enhanced design and superior performance compared to the two previous generations.

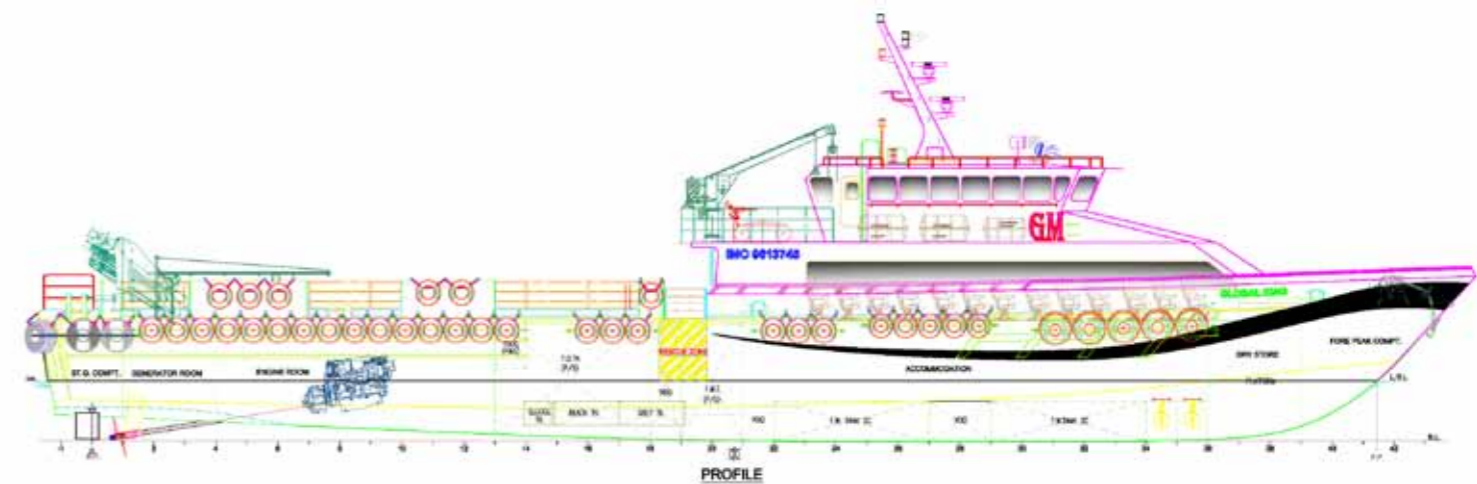
“The new 41M is an advanced version of a highly successful series of crew boats. The diverse

features of the 41M will allow it to perform the duties of the Fast Crew Boat and Offshore Supply vessels to support offshore oil and gas operations.” explained Jamal Abki, Grandweld General Manager.

The vessel has achieved speeds in excess of 26 knots and is equipped with external fire fighting, offshore crane, separate VIP passenger area, and security capabilities. A third vessel “Global Princess” is being built at Grandweld Shipyards at al Jadaf, and is scheduled for delivery on December 2011.

41M MAIN PARTICULARS

LOA	41.77 M
LBP	37.30 M.
Beam	7.30 M.
Hull	Aluminum
Deck Cargo	90 TONS
Crew	12
Seating Capacity ...	83



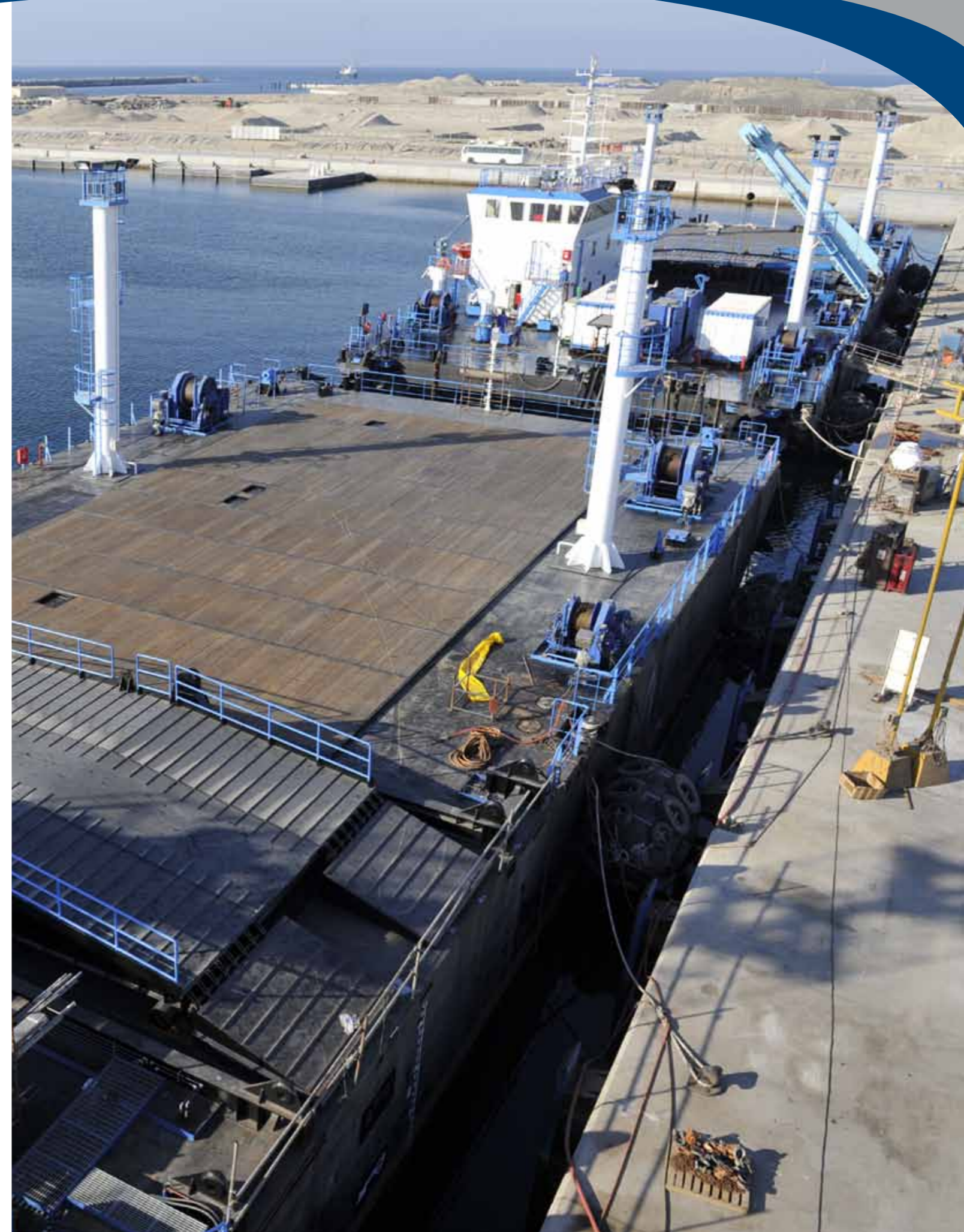
Grandweld Completes Barges Conversion Project

Barges conversion project has been completed, and the barges Delma 9 and Delma 10 for National Marine Dredging Company (NMDC)-Abu Dhabi were successfully delivered meeting owners and charterers' additional requirements.

Delma 10 was delivered on 20 November 2011 and Delma 9 on 30 November 2011. The barges are conversion of flat top barge to manned positioning barges. Barges are now in operation for Zadco Oil Company to work on related developments in oil fields.

Salient features,

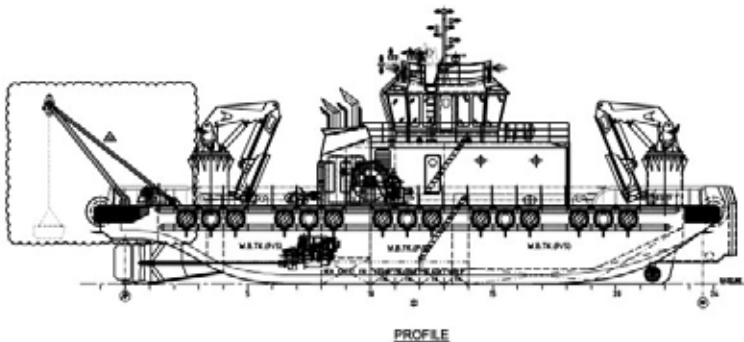
- Added accommodation module for 16 persons including nav-com equipments in bridge.
- Installed piping systems in pump room including bilge system, ballast system, fire system, fresh water system, fuel system, sewage system, oily water system.
- Added movable ramps, gantry for operating ramps, mooring winches and anchoring system.



Grandweld to Deliver its First 30m Multipurpose Shallow Draft Tug Al Khattab to NMDC, Abu Dhabi

The new vessel “Al Khattab”- a 30m Multipurpose Shallow Draft Tug, has successfully completed her sea trial and bollard pull test, and will be delivered at NMDC basin- Abu Dhabi on December 31, 2011. This multipurpose 30m vessel is the first from its type to be designed and built by Grandweld Shipyards. The vessel is designed to perform a wide variety of tasks such as towing, pushing, anchor handling, buoy handling, sea bed leveling, plough dredging, A-Frame handling, Firefighting and supporting other marine civil works. This vessel is equipped with automation and instrumentation for normal duty operations with a periodically unmanned machinery space designation. Furthermore, the vessel is powered by two CAT C32 engines, each capable of producing 1300BHP power, and with two fixed pitch propellers in nozzle.

The special design of this vessel will allow it perform offshore operations safely in tough weather conditions. The deck is heavily strengthened to carry deck load up to 15t/m2, and the hulls are designed for fuel efficiency and are ideal for the harsh operating conditions of the operating region.



30M MAIN PARTICULARS

Type	Multipurpose Shallow Draft Tug
LOA	30.00m
Length on DWL	28.80m
Moulded breadth	12.50m
Moulded depth	3.80 m
Draft	2.6 m ABL
Bollard pull	30t
Speed	11.5knots
Crew Complement	Up to 6 persons